

# Lower Thames Crossing

## 6.2 Environmental Statement Figures

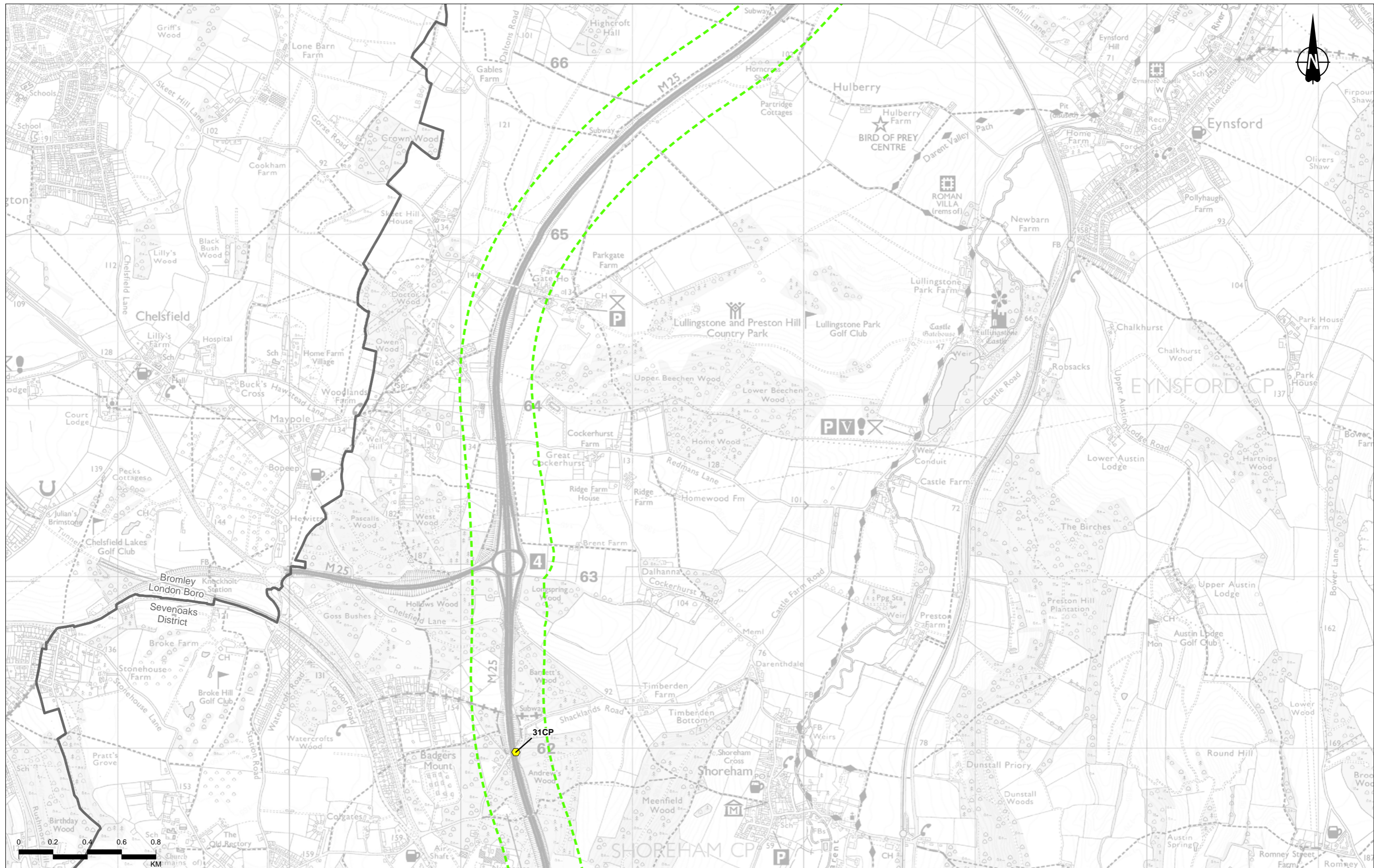
### Figure 5.4 - Air Quality Monitoring Sites and 2016 Annual Mean Data (2 of 3)

APFP Regulation 5(2)(a)  
Infrastructure Planning  
(Applications: Prescribed Forms and Procedure)  
Regulations 2009  
Volume 6

**DATE:** October 2022

Planning Inspectorate Scheme Ref: TR010032  
Application Document Ref: TR010032/APP/6.2

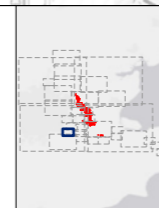
**VERSION:** 1.0



Contains Ordnance Survey data. © Crown copyright and database rights 2022. Ordnance Survey 100030649. Contains public sector information licensed under the Open Government Licence v3.0.

Rev	Status	Rev. Date	Purpose of revision	Drawn	Chkd	Apprv
P02	S8	14/10/2022	DCO Application	CD	MS	PM

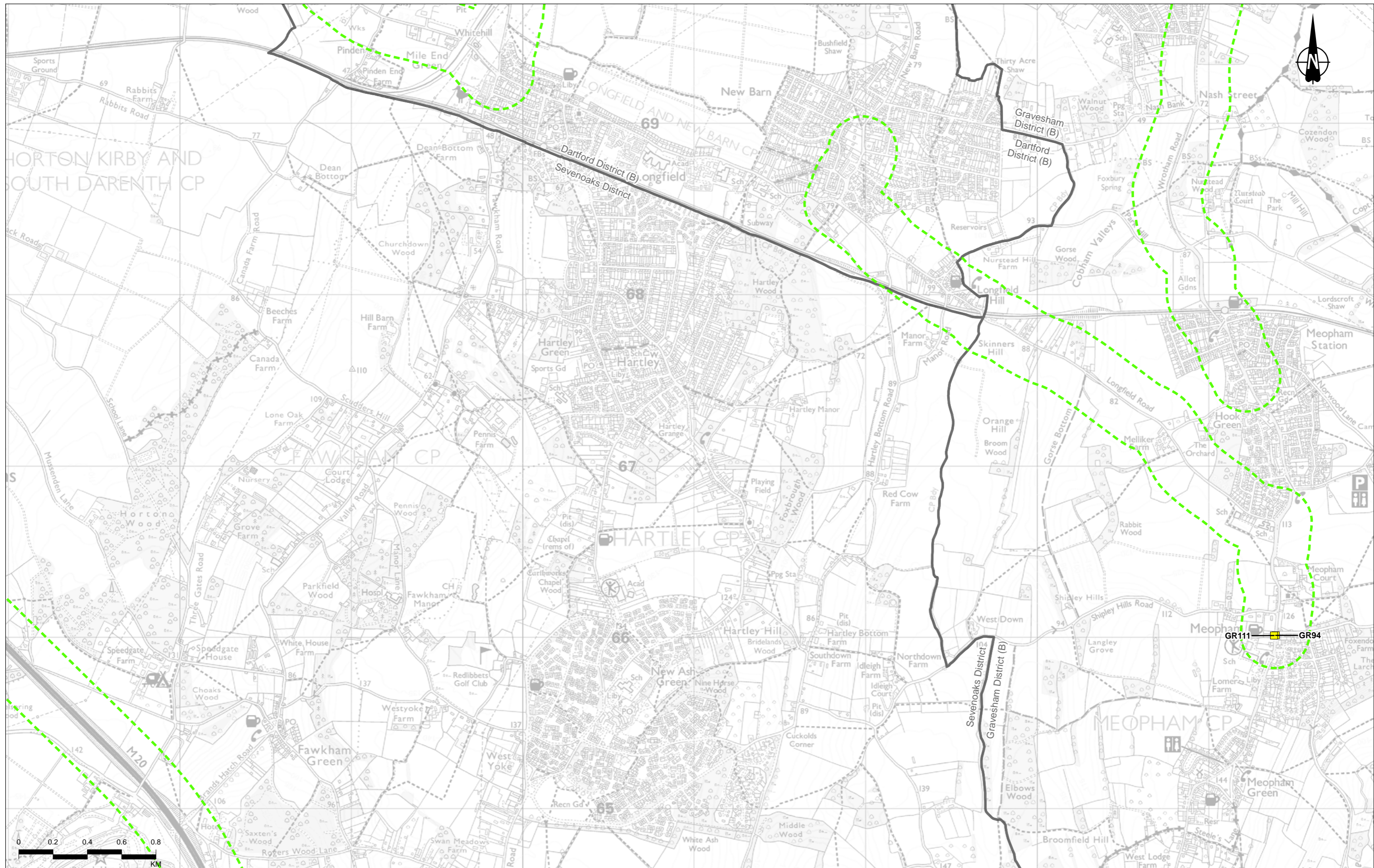
Legend	Local Authority Automatic NO <sub>2</sub> Monitoring	Local Authority Automatic PM <sub>2.5</sub> Monitoring	Local Authority Automatic PM <sub>10</sub> Monitoring	National Highways NO <sub>2</sub> Diffusion Tube Monitoring	Local Authority Automatic PM <sub>2.5</sub> Monitoring	LTC NO <sub>2</sub> Diffusion Tube Monitoring
Route Alignment	36 - 40 ug/m <sup>3</sup>	36 - 40 ug/m <sup>3</sup>	36 - 40 ug/m <sup>3</sup>	<36 ug/m <sup>3</sup>	>40 ug/m <sup>3</sup>	>40 ug/m <sup>3</sup>
Order Limits	>40 ug/m <sup>3</sup>	>40 ug/m <sup>3</sup>	>40 ug/m <sup>3</sup>	>40 ug/m <sup>3</sup>	>40 ug/m <sup>3</sup>	>40 ug/m <sup>3</sup>
District Borough Boundary	36 - 40 ug/m <sup>3</sup>	36 - 40 ug/m <sup>3</sup>	36 - 40 ug/m <sup>3</sup>	<36 ug/m <sup>3</sup>	>40 ug/m <sup>3</sup>	>40 ug/m <sup>3</sup>
Study Area	>40 ug/m <sup>3</sup>	>40 ug/m <sup>3</sup>	>40 ug/m <sup>3</sup>	>40 ug/m <sup>3</sup>	>40 ug/m <sup>3</sup>	>40 ug/m <sup>3</sup>
Local Authority NO <sub>2</sub> Diffusion Tube Monitoring	36 - 40 ug/m <sup>3</sup>	36 - 40 ug/m <sup>3</sup>	36 - 40 ug/m <sup>3</sup>	<36 ug/m <sup>3</sup>	>40 ug/m <sup>3</sup>	>40 ug/m <sup>3</sup>
	>40 ug/m <sup>3</sup>	>40 ug/m <sup>3</sup>	>40 ug/m <sup>3</sup>	>40 ug/m <sup>3</sup>	>40 ug/m <sup>3</sup>	>40 ug/m <sup>3</sup>



Client: **national highways**

Project: **LOWER THAMES CROSSING**

Status	DCO Application	Original Size	A3	Revision	P02
Application Document Number	TR010032/APP/6.2	Scale	1:20,000		
Drawing Title	Figure 5.4 - Air Quality Monitoring Sites and 2016 Annual Mean Data				
	Page 17 of 33				
Drawing Number	HE540039-CJV-EAQ-SZP_EGNE0000000-DR-LE-50008				



Contains Ordnance Survey data. © Crown copyright and database rights 2022. Ordnance Survey 100030649.  
Contains public sector information licensed under the Open Government Licence v3.0.

P02	S8	14/10/2022	DCO Application	CD	MS	PM
Rev	Status	Rev. Date	Purpose of revision	Drawn	Chkd	Apprv

**Legend**

- Route Alignment
- Order Limits
- District Borough Boundary
- Study Area
- Local Authority NO<sub>2</sub> Diffusion Tube Monitoring
- Local Authority Automatic NO<sub>2</sub> Monitoring
- Local Authority Automatic NO<sub>2</sub> Diffusion Tube Monitoring

Orange square	36 - 40 ug/m <sup>3</sup>
Yellow square	<36 ug/m <sup>3</sup>
Red circle	>40 ug/m <sup>3</sup>
Orange circle	36 - 40 ug/m <sup>3</sup>
Yellow circle	<36 ug/m <sup>3</sup>

**Connect Plus NO<sub>2</sub> Diffusion Tube Monitoring**

Yellow circle	<36 ug/m <sup>3</sup>
Red circle	>40 ug/m <sup>3</sup>
Orange circle	36 - 40 ug/m <sup>3</sup>
Yellow circle	<36 ug/m <sup>3</sup>

**National Highways NO<sub>2</sub> Diffusion Tube Monitoring**

Red diamond	>40 ug/m <sup>3</sup>
Orange diamond	36 - 40 ug/m <sup>3</sup>
Yellow diamond	<36 ug/m <sup>3</sup>

**Local Authority Automatic PM<sub>2.5</sub> Monitoring**

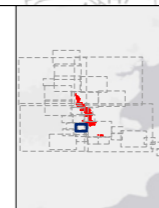
Yellow star	<22.5 ug/m <sup>3</sup>
-------------	-------------------------

**Local Authority Automatic PM<sub>10</sub> Monitoring**

Yellow triangle	<36 ug/m <sup>3</sup>
-----------------	-----------------------

**LTC NO<sub>2</sub> Diffusion Tube Monitoring**

Red triangle	>40 ug/m <sup>3</sup>
Orange triangle	36 - 40 ug/m <sup>3</sup>
Yellow triangle	<36 ug/m <sup>3</sup>

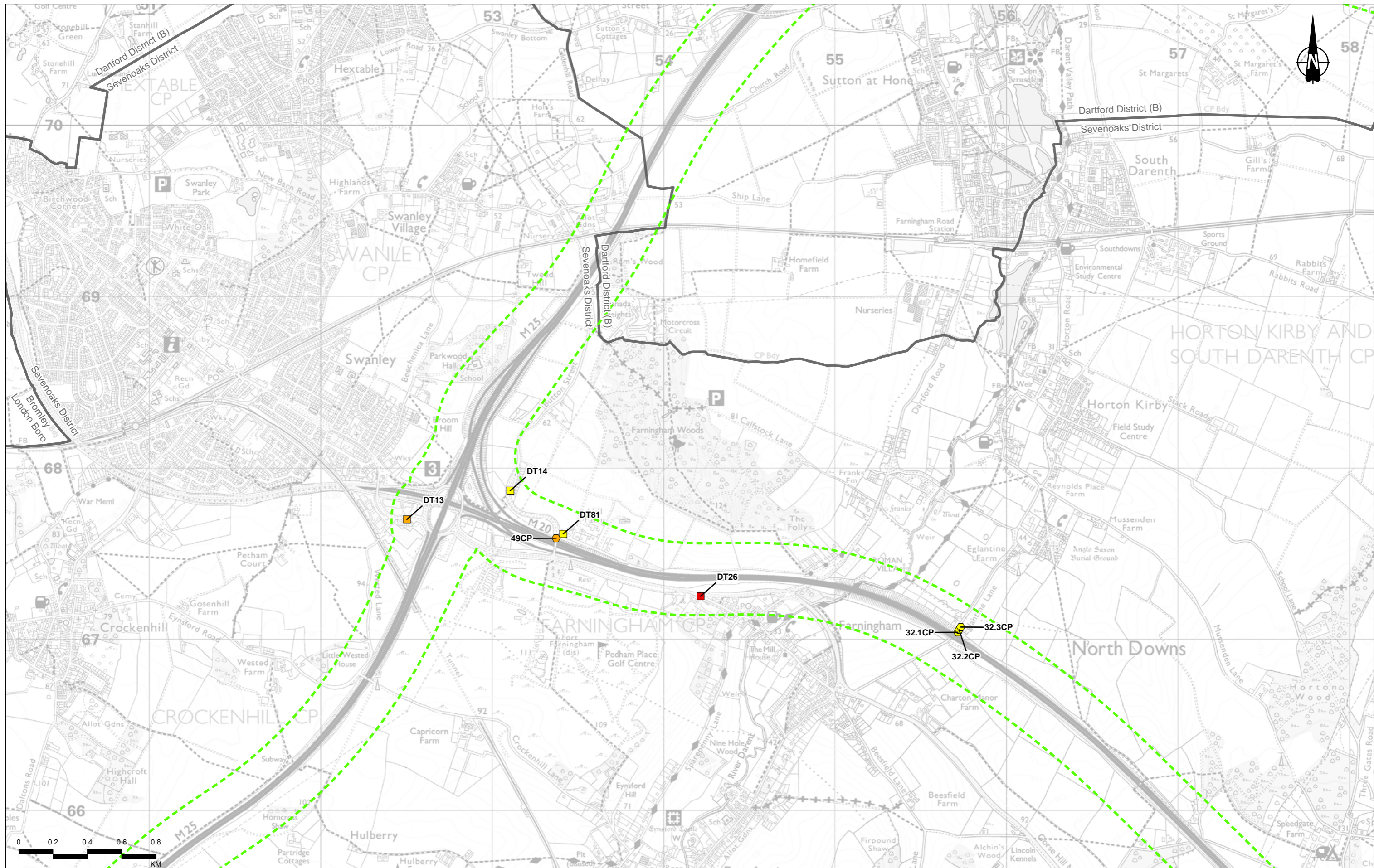


Client: **national highways**

Project: **LOWER THAMES CROSSING**

Status	DCO Application	Original Size	A3	Revision	P02
Application Document Number	TR010032/APP/6.2	Scale	1:20,000		
Drawing Title	Figure 5.4 - Air Quality Monitoring Sites and 2016 Annual Mean Data				
Drawing Number	HE540039-CJV-EAQ-SZP_EGNE0000000-DR-LE-50008				

Page 18 of 33



Contains Ordnance Survey data. © Crown copyright and database rights 2022. Ordnance Survey 100030649.  
Contains public sector information licensed under the Open Government Licence v3.0.

Rev	Status	Rev. Date	Purpose of revision	Drawn	Chkd	Apprvd
P02	S8	14/10/2022	DCO Application	CD	MS	PM

**Legend**

- Route Alignment
- Order Limits
- District Borough Boundary
- Study Area
- Local Authority NO<sub>2</sub> Diffusion Tube Monitoring
- Local Authority Automatic NO<sub>2</sub> Monitoring
- Local Authority Automatic PM<sub>2.5</sub> Monitoring
- Local Authority Automatic PM<sub>10</sub> Monitoring
- National Highways NO<sub>2</sub> Diffusion Tube Monitoring
- Local Authority Automatic PM<sub>2.5</sub> Monitoring
- Local Authority Automatic PM<sub>10</sub> Monitoring
- LTC NO<sub>2</sub> Diffusion Tube Monitoring

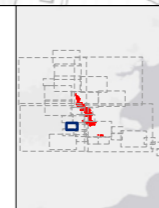
36 - 40 ug/m <sup>3</sup>	<36 ug/m <sup>3</sup>
>40 ug/m <sup>3</sup>	<36 ug/m <sup>3</sup>
36 - 40 ug/m <sup>3</sup>	<36 ug/m <sup>3</sup>
>40 ug/m <sup>3</sup>	<36 ug/m <sup>3</sup>

>40 ug/m <sup>3</sup>	<36 ug/m <sup>3</sup>
36 - 40 ug/m <sup>3</sup>	<36 ug/m <sup>3</sup>
>40 ug/m <sup>3</sup>	<36 ug/m <sup>3</sup>
36 - 40 ug/m <sup>3</sup>	<36 ug/m <sup>3</sup>

>40 ug/m <sup>3</sup>	<36 ug/m <sup>3</sup>
36 - 40 ug/m <sup>3</sup>	<36 ug/m <sup>3</sup>
>40 ug/m <sup>3</sup>	<36 ug/m <sup>3</sup>
36 - 40 ug/m <sup>3</sup>	<36 ug/m <sup>3</sup>

<22.5 ug/m <sup>3</sup>	<36 ug/m <sup>3</sup>
>40 ug/m <sup>3</sup>	<36 ug/m <sup>3</sup>
36 - 40 ug/m <sup>3</sup>	<36 ug/m <sup>3</sup>
>40 ug/m <sup>3</sup>	<36 ug/m <sup>3</sup>

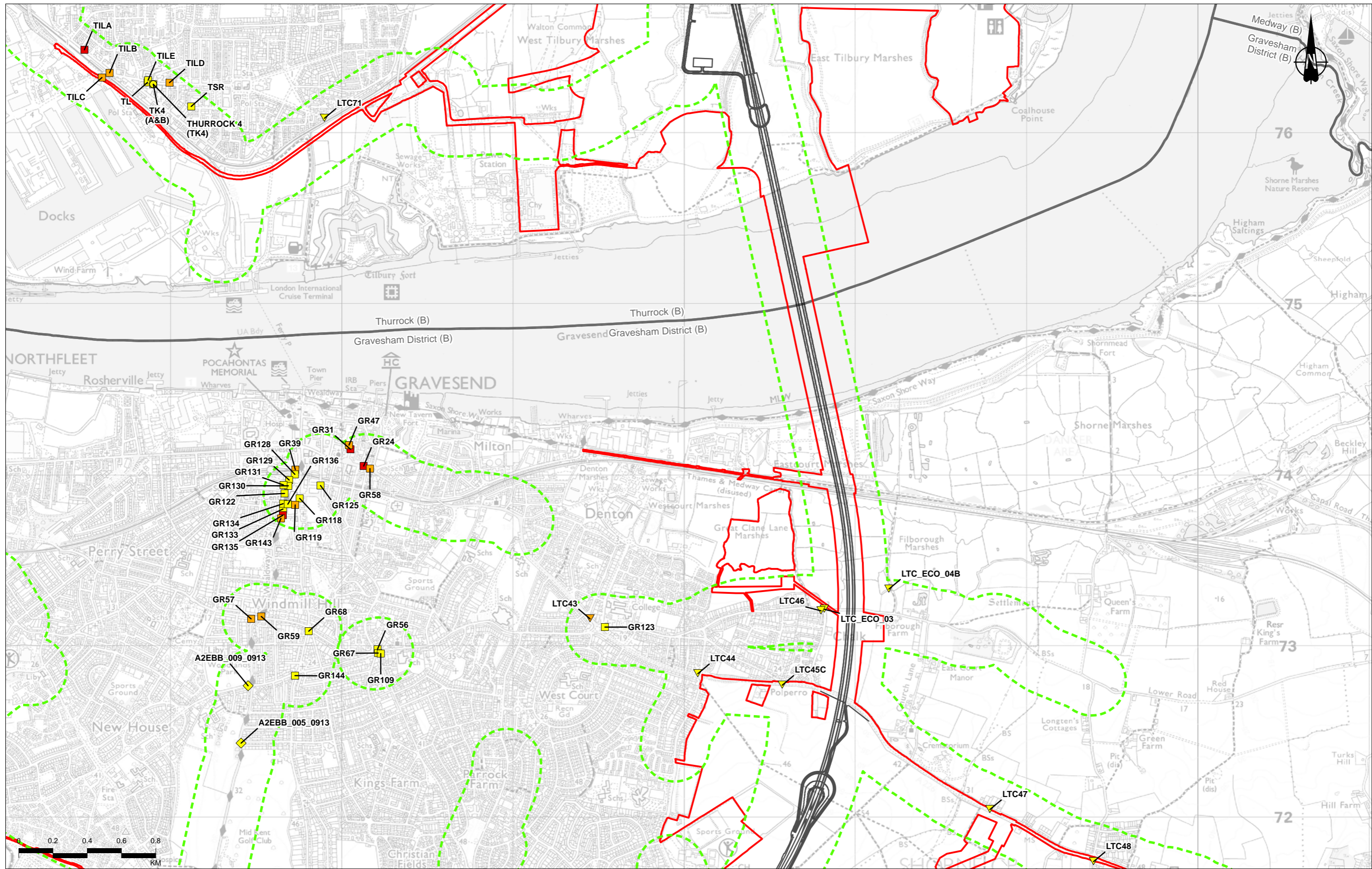
>40 ug/m <sup>3</sup>	<36 ug/m <sup>3</sup>
36 - 40 ug/m <sup>3</sup>	<36 ug/m <sup>3</sup>
>40 ug/m <sup>3</sup>	<36 ug/m <sup>3</sup>
36 - 40 ug/m <sup>3</sup>	<36 ug/m <sup>3</sup>



Client: national highways

Project: LOWER THAMES CROSSING

Status	DCO Application	Original Size	A3	Revision	P02
Application Document Number	TR010032/APP/6.2	Scale	1:20,000		
Drawing Title	Figure 5.4 - Air Quality Monitoring Sites and 2016 Annual Mean Data				
	Page 19 of 33				
Drawing Number	HE540039-CJV-EAQ-SZP_EGNE00000000-DR-LE-50008				



Contains Ordnance Survey data. © Crown copyright and database rights 2022. Ordnance Survey 100030649.  
Contains public sector information licensed under the Open Government Licence v3.0.

P02	S8	14/10/2022	DCO Application	CD	MS	PM
Rev	Status	Rev. Date	Purpose of revision	Drawn	Chkd	Appvd

**Legend**

- Route Alignment
- Order Limits
- District Borough Boundary
- Study Area
- Local Authority NO<sub>2</sub> Diffusion Tube Monitoring

**Local Authority Automatic NO<sub>2</sub> Monitoring**

- 36 - 40 ug/m<sup>3</sup>
- <36 ug/m<sup>3</sup>
- >40 ug/m<sup>3</sup>
- 36 - 40 ug/m<sup>3</sup>
- <36 ug/m<sup>3</sup>

**Connect Plus NO<sub>2</sub> Diffusion Tube Monitoring**

- <36 ug/m<sup>3</sup>
- >40 ug/m<sup>3</sup>
- 36 - 40 ug/m<sup>3</sup>
- <36 ug/m<sup>3</sup>

**National Highways NO<sub>2</sub> Diffusion Tube Monitoring**

- >40 ug/m<sup>3</sup>
- 36 - 40 ug/m<sup>3</sup>
- <36 ug/m<sup>3</sup>

**Local Authority Automatic PM<sub>2.5</sub> Monitoring**

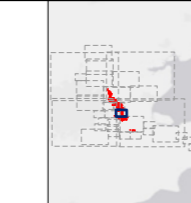
- <22.5 ug/m<sup>3</sup>

**Local Authority Automatic PM<sub>10</sub> Monitoring**

- <36 ug/m<sup>3</sup>

**LTC NO<sub>2</sub> Diffusion Tube Monitoring**

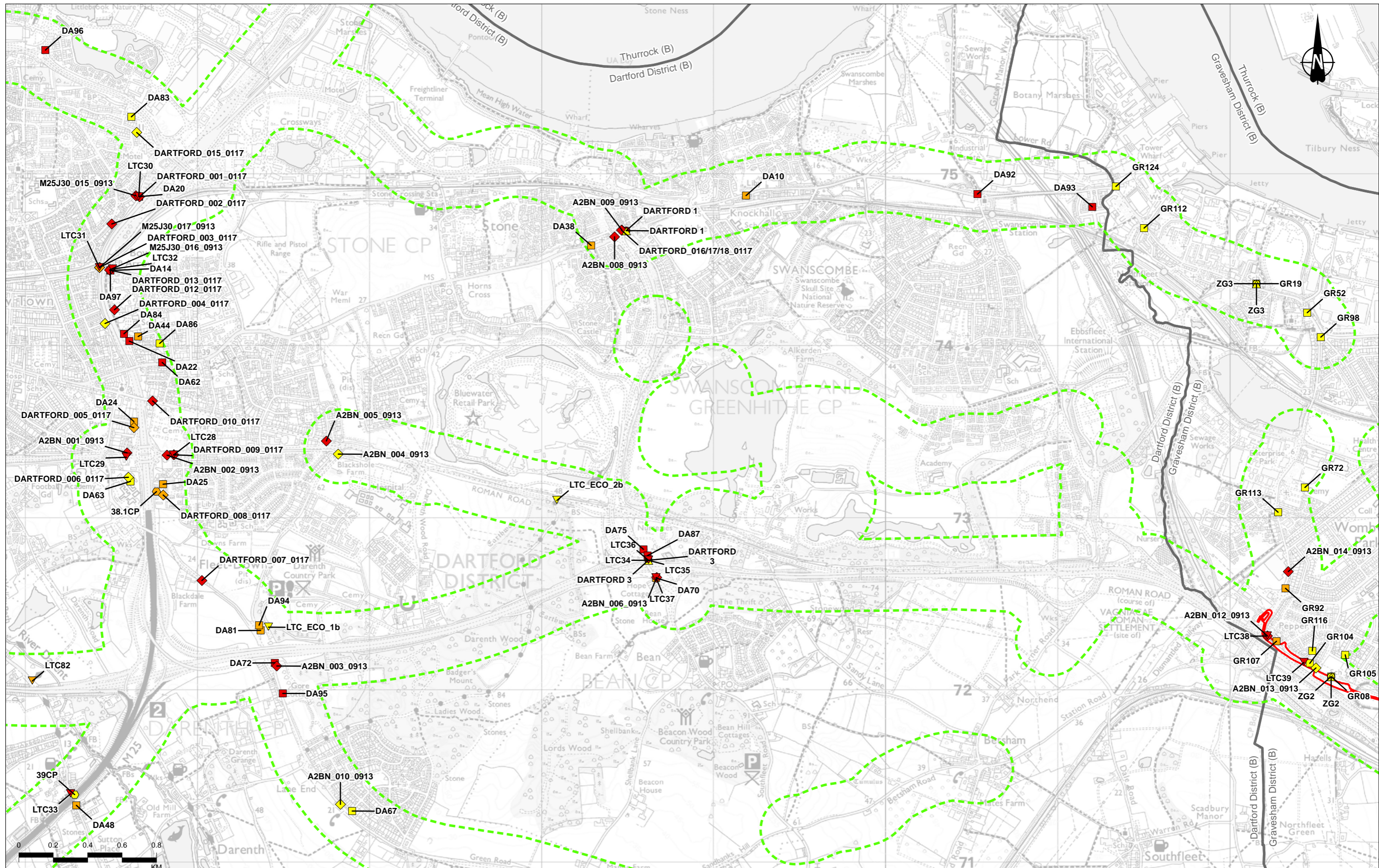
- >40 ug/m<sup>3</sup>
- 36 - 40 ug/m<sup>3</sup>
- <36 ug/m<sup>3</sup>



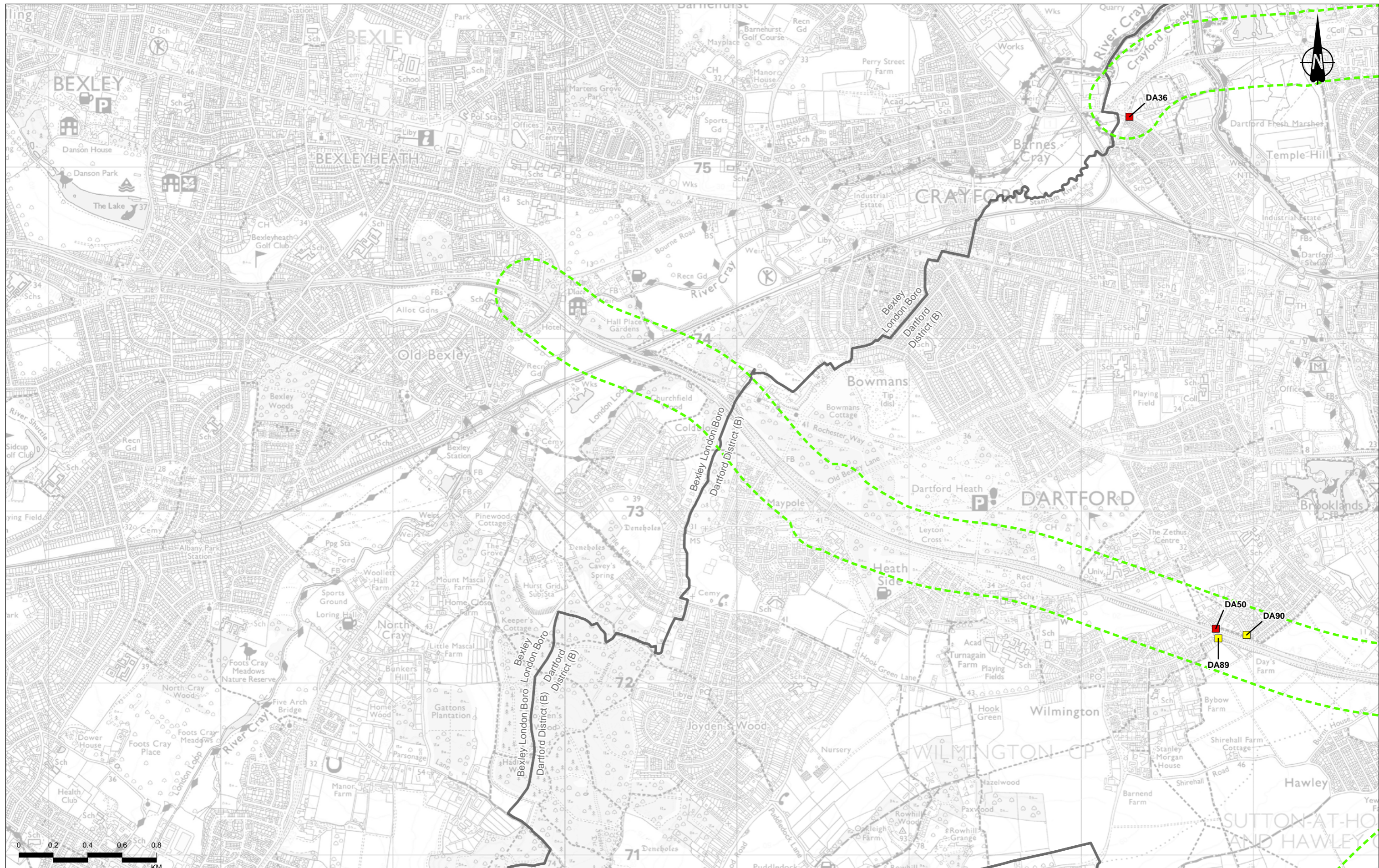
Client: **national highways**

Project: **LOWER THAMES CROSSING**

Status	DCO Application	Original Size	A3	Revision	P02
Application Document Number	TR010032/APP/6.2	Scale	1:20,000		
Drawing Title	Figure 5.4 - Air Quality Monitoring Sites and 2016 Annual Mean Data				
Drawing Number	HE540039-CJV-EAQ-SZP_EGNE00000000-DR-LE-50008				



<p>Contains Ordnance Survey data. © Crown copyright and database rights 2022. Ordnance Survey 100030649. Contains public sector information licensed under the Open Government Licence v3.0.</p>		<p><b>Legend</b></p> <ul style="list-style-type: none"> <li>Route Alignment</li> <li>Order Limits</li> <li>District Borough Boundary</li> <li>Study Area</li> <li>Local Authority NO<sub>2</sub> Diffusion Tube Monitoring</li> </ul>		<p>Local Authority Automatic NO<sub>2</sub> Monitoring</p> <ul style="list-style-type: none"> <li>&gt;40 ug/m<sup>3</sup></li> <li>36 - 40 ug/m<sup>3</sup></li> <li>&lt;36 ug/m<sup>3</sup></li> </ul>		<p>National Highways NO<sub>2</sub> Diffusion Tube Monitoring</p> <ul style="list-style-type: none"> <li>&gt;40 ug/m<sup>3</sup></li> <li>36 - 40 ug/m<sup>3</sup></li> <li>&lt;36 ug/m<sup>3</sup></li> </ul>		<p>Local Authority Automatic PM<sub>2.5</sub> Monitoring</p> <ul style="list-style-type: none"> <li>&gt;22.5 ug/m<sup>3</sup></li> <li>&lt;36 ug/m<sup>3</sup></li> </ul>		<p>Local Authority Automatic PM<sub>10</sub> Monitoring</p> <ul style="list-style-type: none"> <li>&gt;40 ug/m<sup>3</sup></li> <li>36 - 40 ug/m<sup>3</sup></li> <li>&lt;36 ug/m<sup>3</sup></li> </ul>		<p>LTC NO<sub>2</sub> Diffusion Tube Monitoring</p> <ul style="list-style-type: none"> <li>&gt;40 ug/m<sup>3</sup></li> <li>36 - 40 ug/m<sup>3</sup></li> <li>&lt;36 ug/m<sup>3</sup></li> </ul>		<p>Client: <b>national highways</b></p> <p>Project: <b>LOWER THAMES CROSSING</b></p>		<p>Status: DCO Application</p> <p>Application Document Number: TR010032/APP/6.2</p> <p>Drawing Title: <b>Figure 5.4 - Air Quality Monitoring Sites and 2016 Annual Mean Data</b></p> <p>Page 21 of 33</p> <p>Drawing Number: HE540039-CJV-EAQ-SZP_EGNE0000000-DR-LE-50008</p>		<p>Original Size: A3</p> <p>Revision: P02</p> <p>Scale: 1:20,000</p>	
P02	S8	14/10/2022	DCO Application	CD	MS	PM													
Rev	Status	Rev. Date	Purpose of revision	Drawn	Checked	Approved													



Contains Ordnance Survey data. © Crown copyright and database rights 2022. Ordnance Survey 100030649.  
 Contains public sector information licensed under the Open Government Licence v3.0.

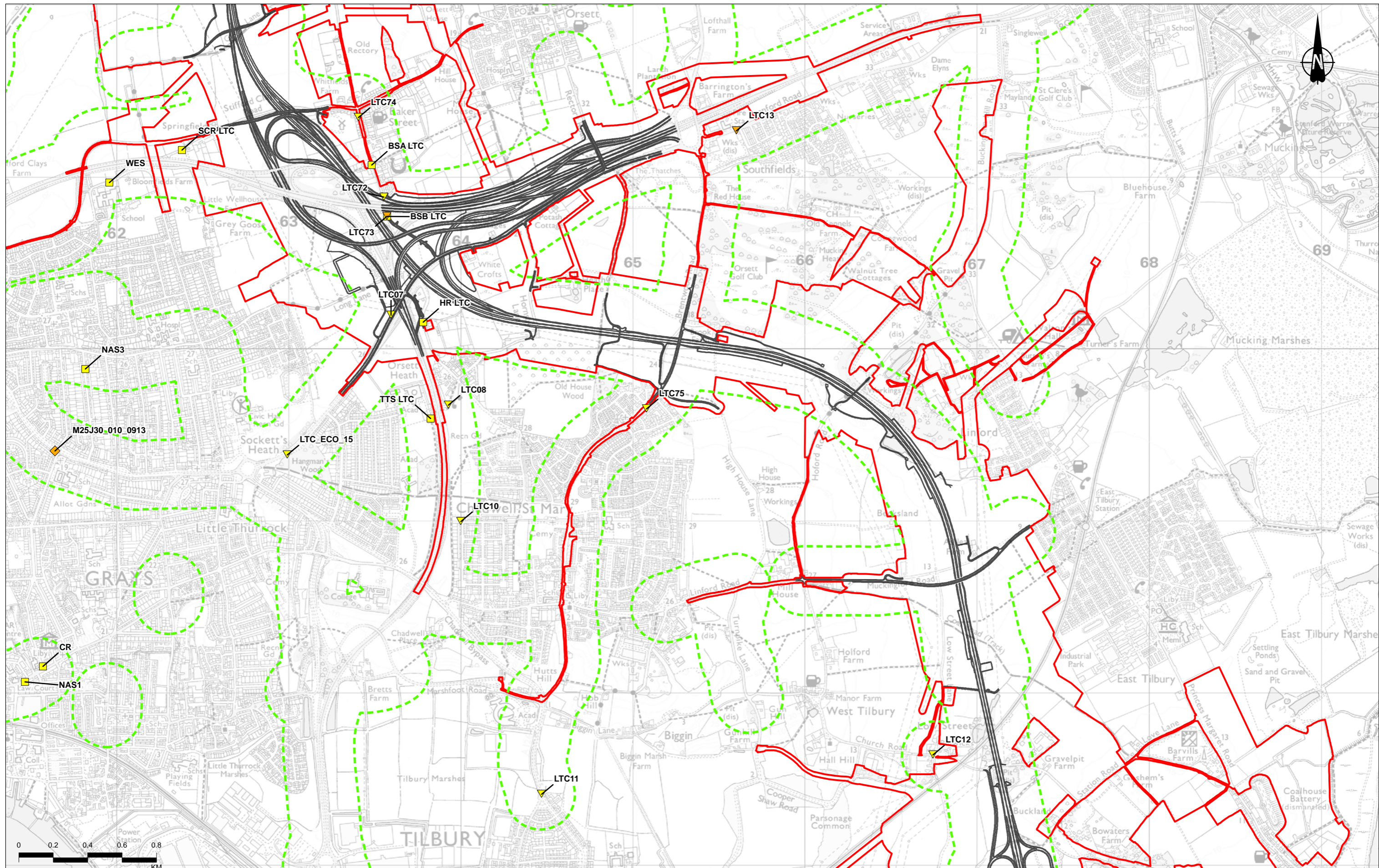
Legend		Local Authority Automatic NO <sub>2</sub> Monitoring		National Highways NO <sub>2</sub> Diffusion Tube Monitoring		Local Authority Automatic PM <sub>2.5</sub> Monitoring		Local Authority Automatic PM <sub>10</sub> Monitoring		LTC NO <sub>2</sub> Diffusion Tube Monitoring	
	Route Alignment		36 - 40 ug/m <sup>3</sup>		<36 ug/m <sup>3</sup>		>40 ug/m <sup>3</sup>		<22.5 ug/m <sup>3</sup>		>40 ug/m <sup>3</sup>
	Order Limits		<36 ug/m <sup>3</sup>		>40 ug/m <sup>3</sup>		36 - 40 ug/m <sup>3</sup>		<36 ug/m <sup>3</sup>		36 - 40 ug/m <sup>3</sup>
	District Borough Boundary		>40 ug/m <sup>3</sup>		36 - 40 ug/m <sup>3</sup>		<36 ug/m <sup>3</sup>		<36 ug/m <sup>3</sup>		<36 ug/m <sup>3</sup>
	Study Area		<36 ug/m <sup>3</sup>		<36 ug/m <sup>3</sup>		<36 ug/m <sup>3</sup>		<36 ug/m <sup>3</sup>		<36 ug/m <sup>3</sup>
	Local Authority NO <sub>2</sub> Diffusion Tube Monitoring		>40 ug/m <sup>3</sup>		<36 ug/m <sup>3</sup>		<36 ug/m <sup>3</sup>		<36 ug/m <sup>3</sup>		<36 ug/m <sup>3</sup>

P02	S8	14/10/2022	DCO Application	CD	MS	PM
Rev	Status	Rev. Date	Purpose of revision	Drawn	Checked	Approved

Client: national highways

Project: LOWER THAMES CROSSING

Status	DCO Application	Original Size	A3	Revision	P02
Application Document Number	TR010032/APP/6.2	Scale	1:20,000		
Drawing Title	Figure 5.4 - Air Quality Monitoring Sites and 2016 Annual Mean Data				
	Page 22 of 33				
Drawing Number	HE540039-CJV-EAQ-SZP_EGNE00000000-DR-LE-50008				



Rev	Status	Rev. Date	Purpose of revision	Drawn	Chkd	Apprvd
P02	S8	14/10/2022	DCO Application	CD	MS	PM

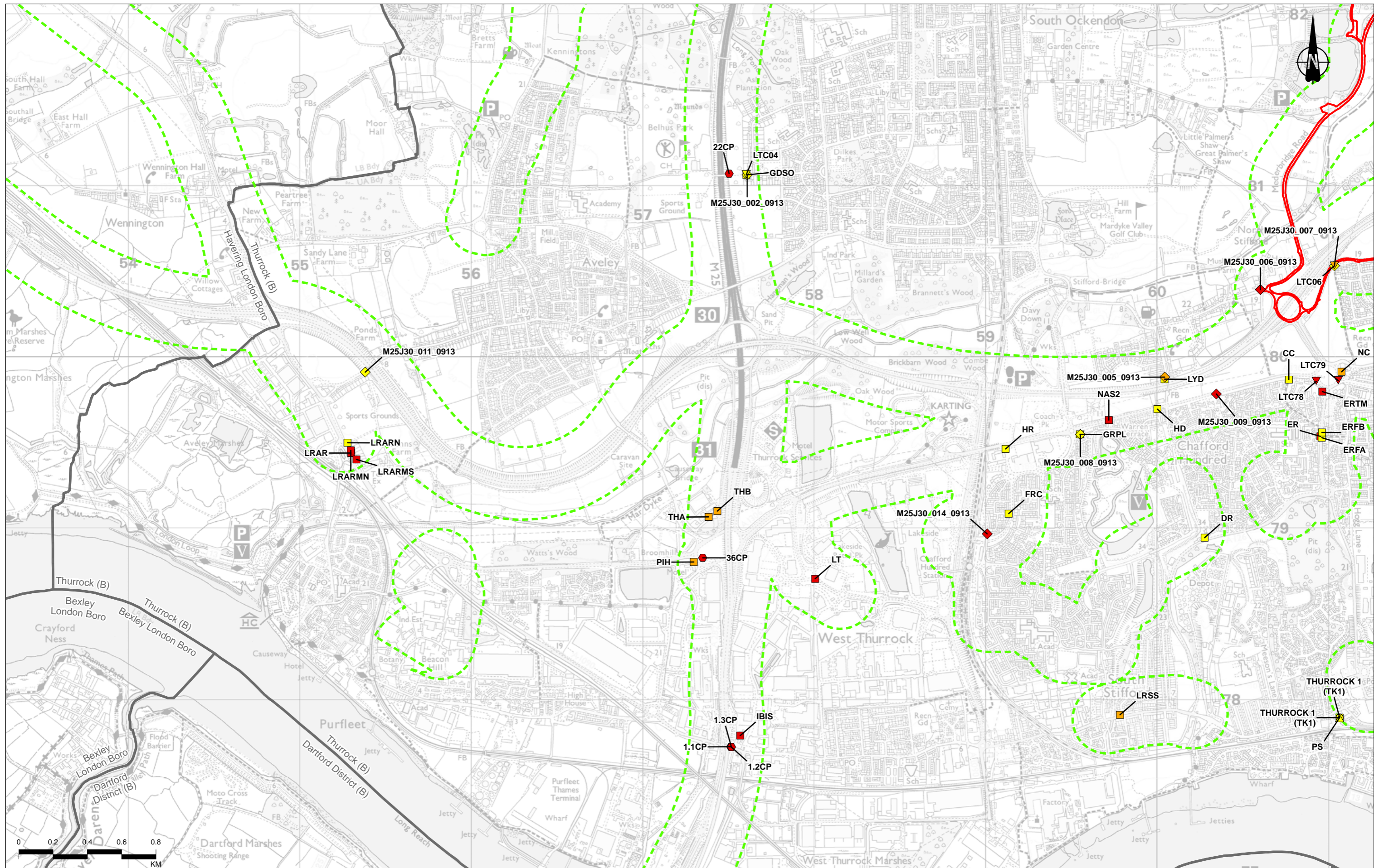
Legend	Local Authority Automatic NO <sub>2</sub> Monitoring	Connect Plus NO <sub>2</sub> Diffusion Tube Monitoring	National Highways NO <sub>2</sub> Diffusion Tube Monitoring	Local Authority Automatic PM <sub>2.5</sub> Monitoring	Local Authority Automatic PM <sub>10</sub> Monitoring	LTC NO <sub>2</sub> Diffusion Tube Monitoring
Route Alignment	36 - 40 ug/m <sup>3</sup>	<36 ug/m <sup>3</sup>	<36 ug/m <sup>3</sup>	>22.5 ug/m <sup>3</sup>	>40 ug/m <sup>3</sup>	>40 ug/m <sup>3</sup>
Order Limits	>40 ug/m <sup>3</sup>	>40 ug/m <sup>3</sup>	>40 ug/m <sup>3</sup>	<36 ug/m <sup>3</sup>	36 - 40 ug/m <sup>3</sup>	36 - 40 ug/m <sup>3</sup>
District Borough Boundary	36 - 40 ug/m <sup>3</sup>	<36 ug/m <sup>3</sup>	>40 ug/m <sup>3</sup>	>40 ug/m <sup>3</sup>	<36 ug/m <sup>3</sup>	<36 ug/m <sup>3</sup>
Study Area	>40 ug/m <sup>3</sup>	>40 ug/m <sup>3</sup>	>40 ug/m <sup>3</sup>	<36 ug/m <sup>3</sup>	>40 ug/m <sup>3</sup>	>40 ug/m <sup>3</sup>
Local Authority NO <sub>2</sub> Diffusion Tube Monitoring	>40 ug/m <sup>3</sup>	>40 ug/m <sup>3</sup>	>40 ug/m <sup>3</sup>	<36 ug/m <sup>3</sup>	>40 ug/m <sup>3</sup>	>40 ug/m <sup>3</sup>
	>40 ug/m <sup>3</sup>	>40 ug/m <sup>3</sup>	>40 ug/m <sup>3</sup>	<36 ug/m <sup>3</sup>	>40 ug/m <sup>3</sup>	>40 ug/m <sup>3</sup>

Client: national highways

Project: LOWER THAMES CROSSING

Status	DCO Application	Original Size	A3	Revision	P02
Application Document Number	TR010032/APP/6.2	Scale	1:20,000		
Drawing Title	Figure 5.4 - Air Quality Monitoring Sites and 2016 Annual Mean Data				
	Page 23 of 33				
Drawing Number	HE540039-CJV-EAQ-SZP_EGNE0000000-DR-LE-50008				

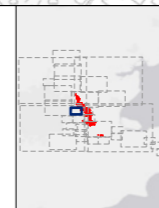




Contains Ordnance Survey data. © Crown copyright and database rights 2022. Ordnance Survey 100030649.  
 Contains public sector information licensed under the Open Government Licence v3.0.

P02	S8	14/10/2022	DCO Application	CD	MS	PM
Rev	Status	Rev. Date	Purpose of revision	Drawn	Chkd	Apprvd

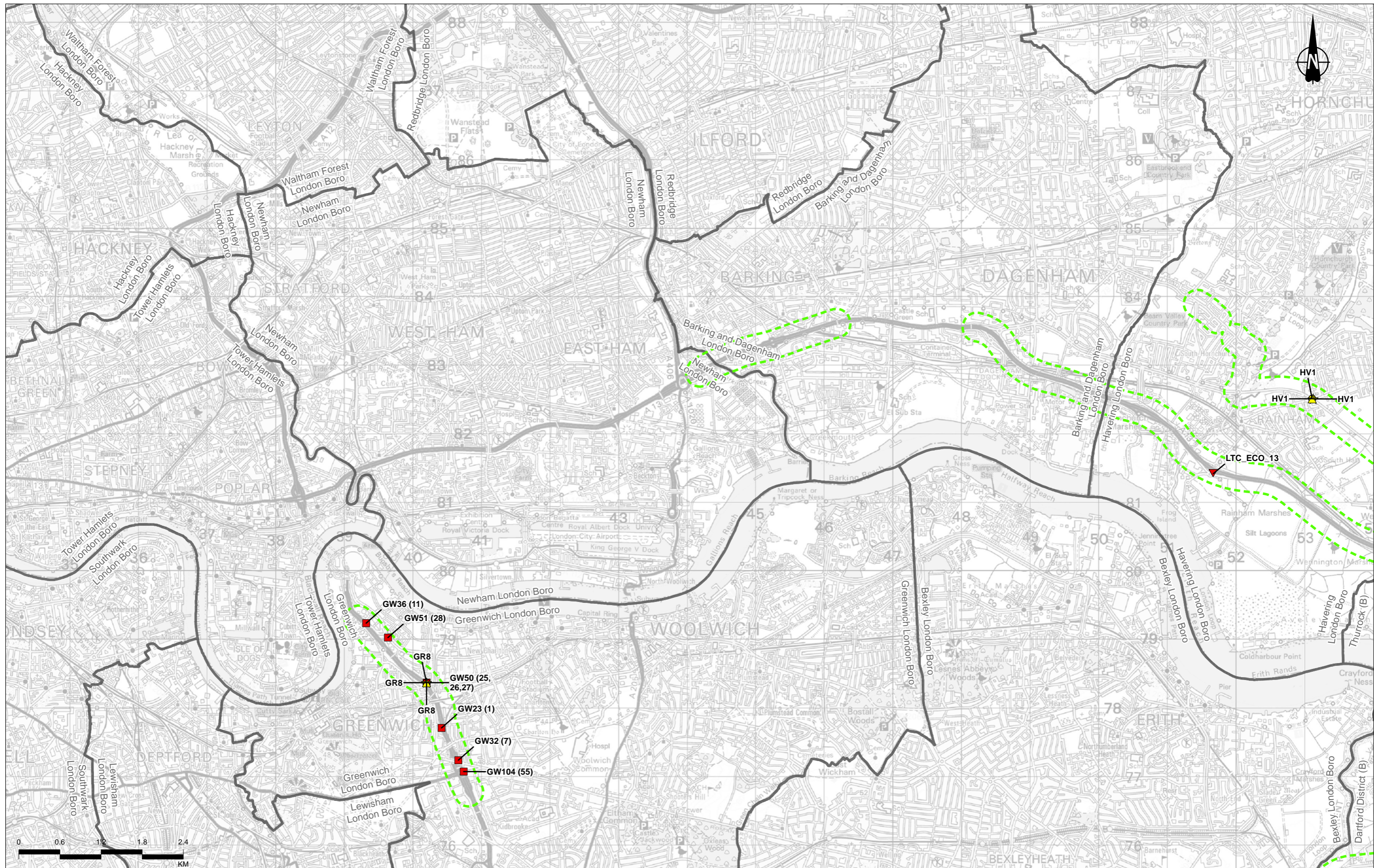
<b>Legend</b> Route Alignment Order Limits District Borough Boundary Study Area Local Authority NO <sub>2</sub> Diffusion Tube Monitoring >40 ug/m <sup>3</sup>	Local Authority Automatic NO <sub>2</sub> Monitoring >40 ug/m <sup>3</sup> 36 - 40 ug/m <sup>3</sup> <36 ug/m <sup>3</sup>	Connect Plus NO <sub>2</sub> Diffusion Tube Monitoring >40 ug/m <sup>3</sup> 36 - 40 ug/m <sup>3</sup> <36 ug/m <sup>3</sup>	National Highways NO <sub>2</sub> Diffusion Tube Monitoring >40 ug/m <sup>3</sup> 36 - 40 ug/m <sup>3</sup> <36 ug/m <sup>3</sup>	Local Authority Automatic PM <sub>2.5</sub> Monitoring <22.5 ug/m <sup>3</sup>	Local Authority Automatic PM <sub>10</sub> Monitoring <36 ug/m <sup>3</sup>	LTC NO <sub>2</sub> Diffusion Tube Monitoring >40 ug/m <sup>3</sup> 36 - 40 ug/m <sup>3</sup> <36 ug/m <sup>3</sup>
-----------------------------------------------------------------------------------------------------------------------------------------------------------------------------------	-------------------------------------------------------------------------------------------------------------------------------------	---------------------------------------------------------------------------------------------------------------------------------------	--------------------------------------------------------------------------------------------------------------------------------------------	-----------------------------------------------------------------------------------	--------------------------------------------------------------------------------	------------------------------------------------------------------------------------------------------------------------------



Client: **national highways**

Project: **LOWER THAMES CROSSING**

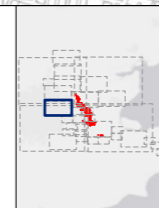
Status	DCO Application	Original Size	A3	Revision	P02
Application Document Number	TR010032/APP/6.2	Scale	1:20,000		
Drawing Title	Figure 5.4 - Air Quality Monitoring Sites and 2016 Annual Mean Data Page 24 of 33				
Drawing Number	HE540039-CJV-EAQ-SZP_EGNE00000000-DR-LE-50008				



Contains Ordnance Survey data. © Crown copyright and database rights 2022. Ordnance Survey 100030649  
Contains public sector information licensed under the Open Government Licence v3.0.

P02	S8	14/10/2022	DCO Application	CD	MS	PM
Rev	Status	Rev. Date	Purpose of revision	Drawn	Checked	Approved

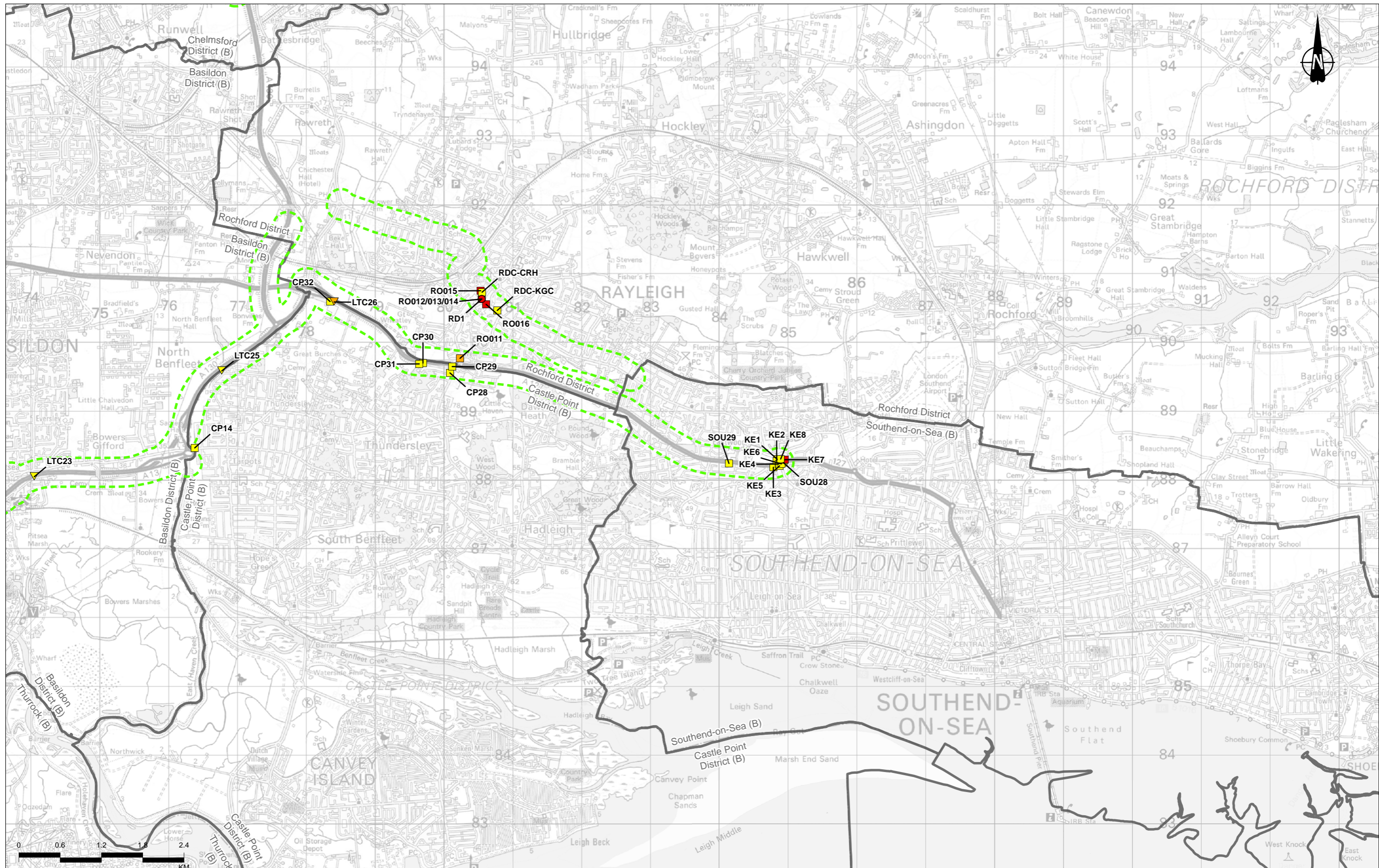
<b>Legend</b> Route Alignment Order Limits District Borough Boundary Study Area Local Authority NO <sub>2</sub> Diffusion Tube Monitoring >40 ug/m <sup>3</sup>	36 - 40 ug/m <sup>3</sup> <36 ug/m <sup>3</sup> <b>Local Authority Automatic NO<sub>2</sub> Monitoring</b> >40 ug/m <sup>3</sup> 36 - 40 ug/m <sup>3</sup> <36 ug/m <sup>3</sup>	<b>Connect Plus NO<sub>2</sub> Diffusion Tube Monitoring</b> >40 ug/m <sup>3</sup> 36 - 40 ug/m <sup>3</sup> <36 ug/m <sup>3</sup>	<b>National Highways NO<sub>2</sub> Diffusion Tube Monitoring</b> >40 ug/m <sup>3</sup> 36 - 40 ug/m <sup>3</sup> <36 ug/m <sup>3</sup>	<b>Local Authority Automatic PM<sub>2.5</sub> Monitoring</b> <22.5 ug/m <sup>3</sup> <b>Local Authority Automatic PM<sub>10</sub> Monitoring</b> <36 ug/m <sup>3</sup>	<b>LTC NO<sub>2</sub> Diffusion Tube Monitoring</b> >40 ug/m <sup>3</sup> 36 - 40 ug/m <sup>3</sup> <36 ug/m <sup>3</sup>
-----------------------------------------------------------------------------------------------------------------------------------------------------------------------------------	-------------------------------------------------------------------------------------------------------------------------------------------------------------------------------------------------	---------------------------------------------------------------------------------------------------------------------------------------------	--------------------------------------------------------------------------------------------------------------------------------------------------	---------------------------------------------------------------------------------------------------------------------------------------------------------------------------------	------------------------------------------------------------------------------------------------------------------------------------



Client: **national highways**

Project: **LOWER THAMES CROSSING**

Status	DCO Application	Original Size	A3	Revision	P02
Application Document Number	TR010032/APP/6.2	Scale	1:50,000		
Drawing Title	Figure 5.4 - Air Quality Monitoring Sites and 2016 Annual Mean Data				
Drawing Number	HE540039-CJV-EAQ-SZP_EGNE00000000-DR-LE-50008				
Page 25 of 33					



Route Alignment	Order Limits	District Borough Boundary	Study Area	Local Authority NO <sub>2</sub> Diffusion Tube Monitoring
Local Authority Automatic NO <sub>2</sub> Monitoring	Local Authority Automatic PM <sub>2.5</sub> Monitoring	Local Authority Automatic PM <sub>10</sub> Monitoring	LTC NO <sub>2</sub> Diffusion Tube Monitoring	
Yellow square	Red square	Yellow star	Yellow triangle	Red square
<36 ug/m <sup>3</sup>	>40 ug/m <sup>3</sup>	<22.5 ug/m <sup>3</sup>	>40 ug/m <sup>3</sup>	>40 ug/m <sup>3</sup>
Yellow square	Red square	Yellow star	Yellow triangle	Red square
<36 ug/m <sup>3</sup>	>40 ug/m <sup>3</sup>	<22.5 ug/m <sup>3</sup>	>40 ug/m <sup>3</sup>	>40 ug/m <sup>3</sup>
Yellow square	Red square	Yellow star	Yellow triangle	Red square
<36 ug/m <sup>3</sup>	>40 ug/m <sup>3</sup>	<22.5 ug/m <sup>3</sup>	>40 ug/m <sup>3</sup>	>40 ug/m <sup>3</sup>
Yellow square	Red square	Yellow star	Yellow triangle	Red square
<36 ug/m <sup>3</sup>	>40 ug/m <sup>3</sup>	<22.5 ug/m <sup>3</sup>	>40 ug/m <sup>3</sup>	>40 ug/m <sup>3</sup>

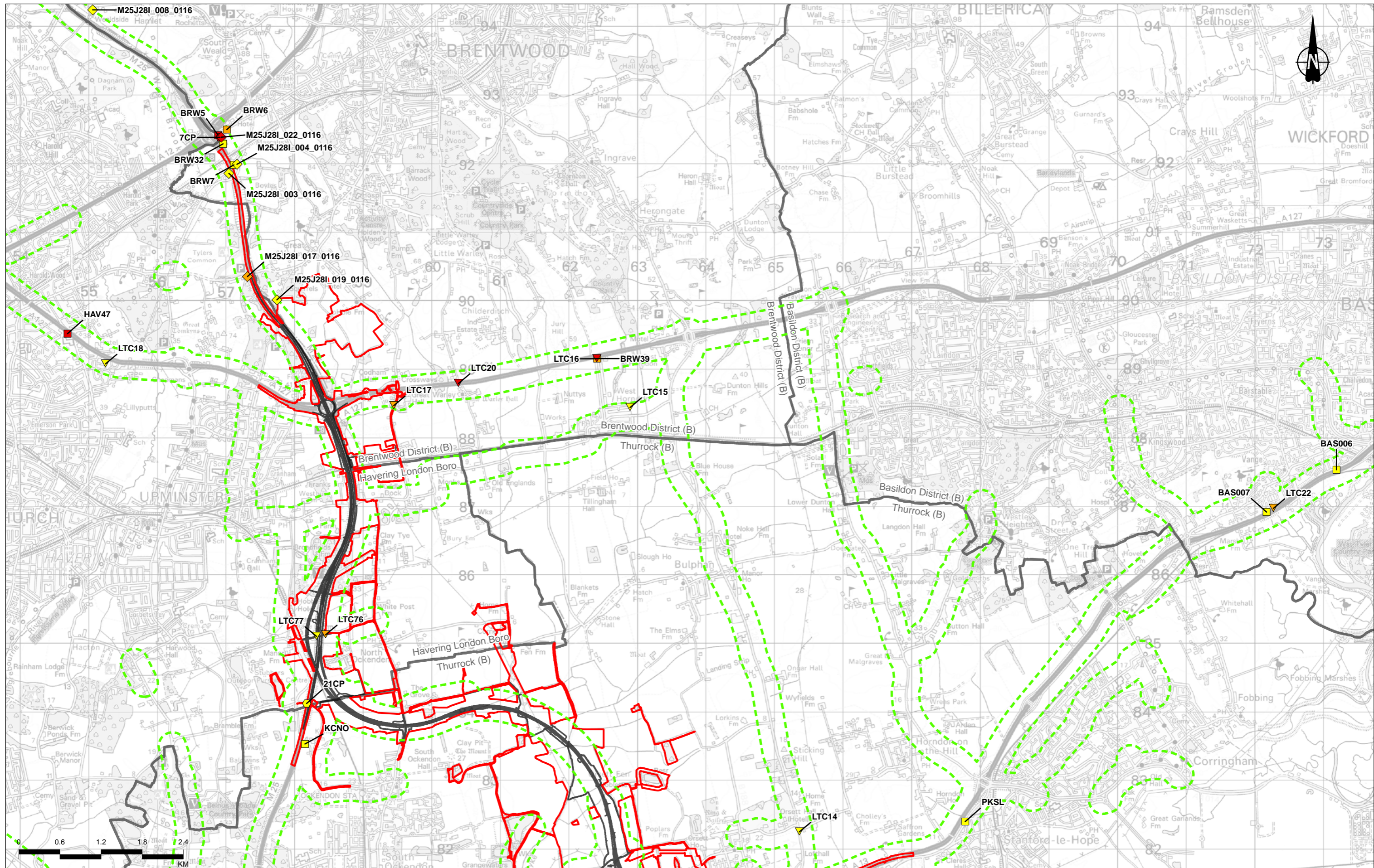
National Highways NO <sub>2</sub> Diffusion Tube Monitoring	Local Authority Automatic PM <sub>2.5</sub> Monitoring	Local Authority Automatic PM <sub>10</sub> Monitoring	LTC NO <sub>2</sub> Diffusion Tube Monitoring
Red diamond	Yellow star	Yellow star	Yellow triangle
>40 ug/m <sup>3</sup>	<22.5 ug/m <sup>3</sup>	<22.5 ug/m <sup>3</sup>	>40 ug/m <sup>3</sup>
Red diamond	Yellow star	Yellow star	Yellow triangle
>40 ug/m <sup>3</sup>	<22.5 ug/m <sup>3</sup>	<22.5 ug/m <sup>3</sup>	>40 ug/m <sup>3</sup>
Red diamond	Yellow star	Yellow star	Yellow triangle
>40 ug/m <sup>3</sup>	<22.5 ug/m <sup>3</sup>	<22.5 ug/m <sup>3</sup>	>40 ug/m <sup>3</sup>
Red diamond	Yellow star	Yellow star	Yellow triangle
>40 ug/m <sup>3</sup>	<22.5 ug/m <sup>3</sup>	<22.5 ug/m <sup>3</sup>	>40 ug/m <sup>3</sup>

Local Authority Automatic PM <sub>2.5</sub> Monitoring	Local Authority Automatic PM <sub>10</sub> Monitoring	LTC NO <sub>2</sub> Diffusion Tube Monitoring
Yellow star	Yellow star	Yellow triangle
<22.5 ug/m <sup>3</sup>	<22.5 ug/m <sup>3</sup>	>40 ug/m <sup>3</sup>
Yellow star	Yellow star	Yellow triangle
<22.5 ug/m <sup>3</sup>	<22.5 ug/m <sup>3</sup>	>40 ug/m <sup>3</sup>
Yellow star	Yellow star	Yellow triangle
<22.5 ug/m <sup>3</sup>	<22.5 ug/m <sup>3</sup>	>40 ug/m <sup>3</sup>
Yellow star	Yellow star	Yellow triangle
<22.5 ug/m <sup>3</sup>	<22.5 ug/m <sup>3</sup>	>40 ug/m <sup>3</sup>

Client: national highways

Project: LOWER THAMES CROSSING

Status	DCO Application	Original Size	A3	Revision	P02
Application Document Number	TR010032/APP/6.2	Scale	1:50,000		
Drawing Title	Figure 5.4 - Air Quality Monitoring Sites and 2016 Annual Mean Data				
Drawing Number	HE540039-CJV-EAQ-SZP_EGNE00000000-DR-LE-50008				
Page 26 of 33					



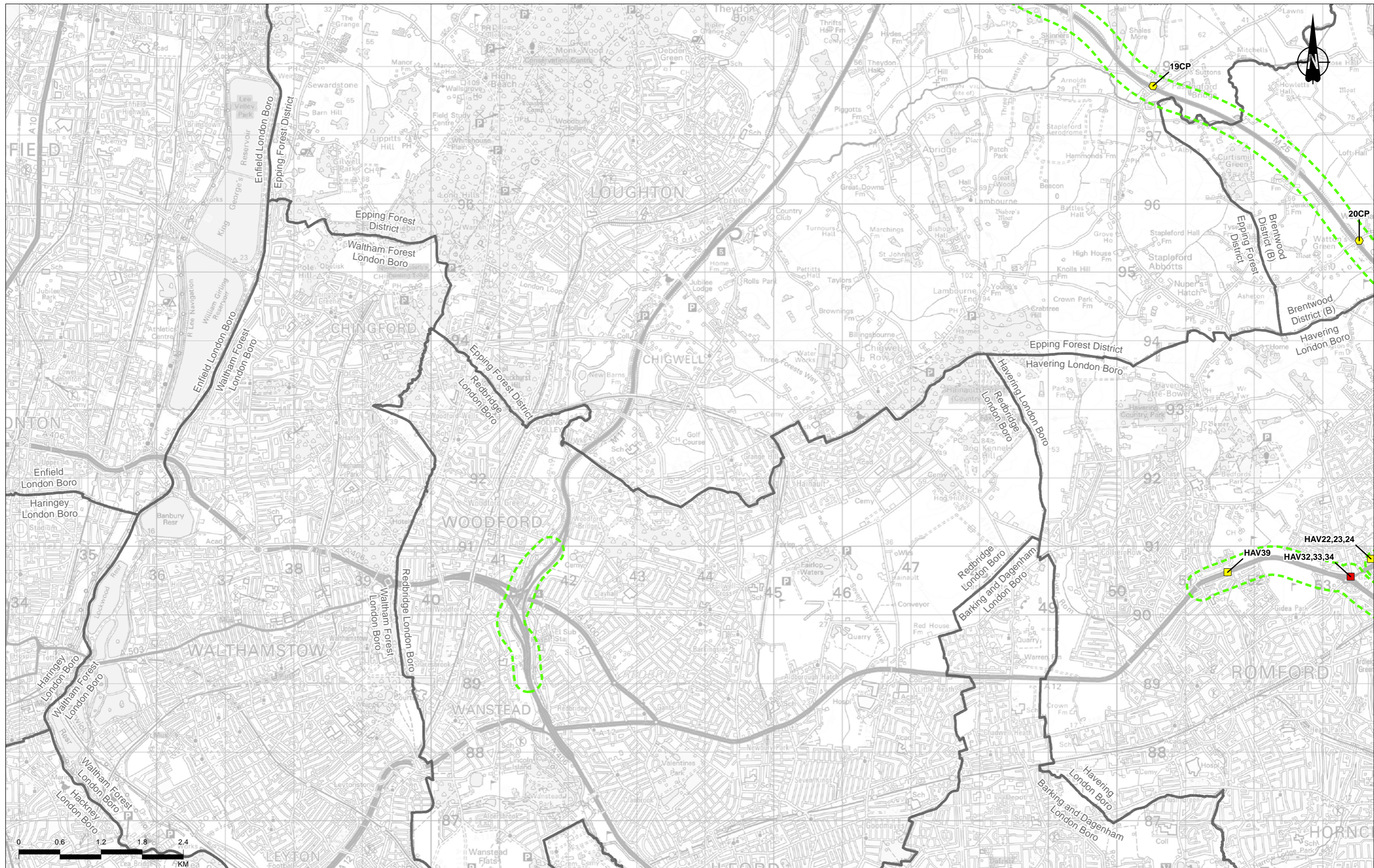
<p><b>Legend</b></p> <ul style="list-style-type: none"> <li>Route Alignment</li> <li>Order Limits</li> <li>District Borough Boundary</li> <li>Study Area</li> <li>Local Authority NO<sub>2</sub> Diffusion Tube Monitoring</li> </ul>	<ul style="list-style-type: none"> <li>36 - 40 ug/m<sup>3</sup></li> <li>&lt;36 ug/m<sup>3</sup></li> </ul> <p><b>Local Authority Automatic NO<sub>2</sub> Monitoring</b></p> <ul style="list-style-type: none"> <li>&gt;40 ug/m<sup>3</sup></li> <li>36 - 40 ug/m<sup>3</sup></li> <li>&lt;36 ug/m<sup>3</sup></li> </ul>	<p><b>National Highways NO<sub>2</sub> Diffusion Tube Monitoring</b></p> <ul style="list-style-type: none"> <li>&gt;40 ug/m<sup>3</sup></li> <li>36 - 40 ug/m<sup>3</sup></li> <li>&lt;36 ug/m<sup>3</sup></li> </ul>	<p><b>Local Authority Automatic PM<sub>2.5</sub> Monitoring</b></p> <ul style="list-style-type: none"> <li>★ &lt;22.5 ug/m<sup>3</sup></li> </ul> <p><b>Local Authority Automatic PM<sub>10</sub> Monitoring</b></p> <ul style="list-style-type: none"> <li>▲ &lt;36 ug/m<sup>3</sup></li> </ul>	<p><b>LTC NO<sub>2</sub> Diffusion Tube Monitoring</b></p> <ul style="list-style-type: none"> <li>▼ &gt;40 ug/m<sup>3</sup></li> <li>▽ 36 - 40 ug/m<sup>3</sup></li> <li>▽ &lt;36 ug/m<sup>3</sup></li> </ul>
---------------------------------------------------------------------------------------------------------------------------------------------------------------------------------------------------------------------------------------	----------------------------------------------------------------------------------------------------------------------------------------------------------------------------------------------------------------------------------------------------------------------------------------------------------------------------	-----------------------------------------------------------------------------------------------------------------------------------------------------------------------------------------------------------------------	--------------------------------------------------------------------------------------------------------------------------------------------------------------------------------------------------------------------------------------------------------------------------------------------------	---------------------------------------------------------------------------------------------------------------------------------------------------------------------------------------------------------------

P02	S8	14/10/2022	DCO Application	CD	MS	PM
Rev	Status	Rev. Date	Purpose of revision	Drawn	Checked	Approved

Client: **national highways**

Project: **LOWER THAMES CROSSING**

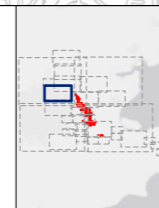
Status	DCO Application	Original Size	A3	Revision	P02
Application Document Number	TR010032/APP/6.2	Scale	1:50,000		
Drawing Title	Figure 5.4 - Air Quality Monitoring Sites and 2016 Annual Mean Data				
Drawing Number	HE540039-CJV-EAQ-SZP_EGNE00000000-DR-LE-50008				
Page 27 of 33					



Contains Ordnance Survey data. © Crown copyright and database rights 2022. Ordnance Survey 100030649.  
Contains public sector information licensed under the Open Government Licence v3.0.

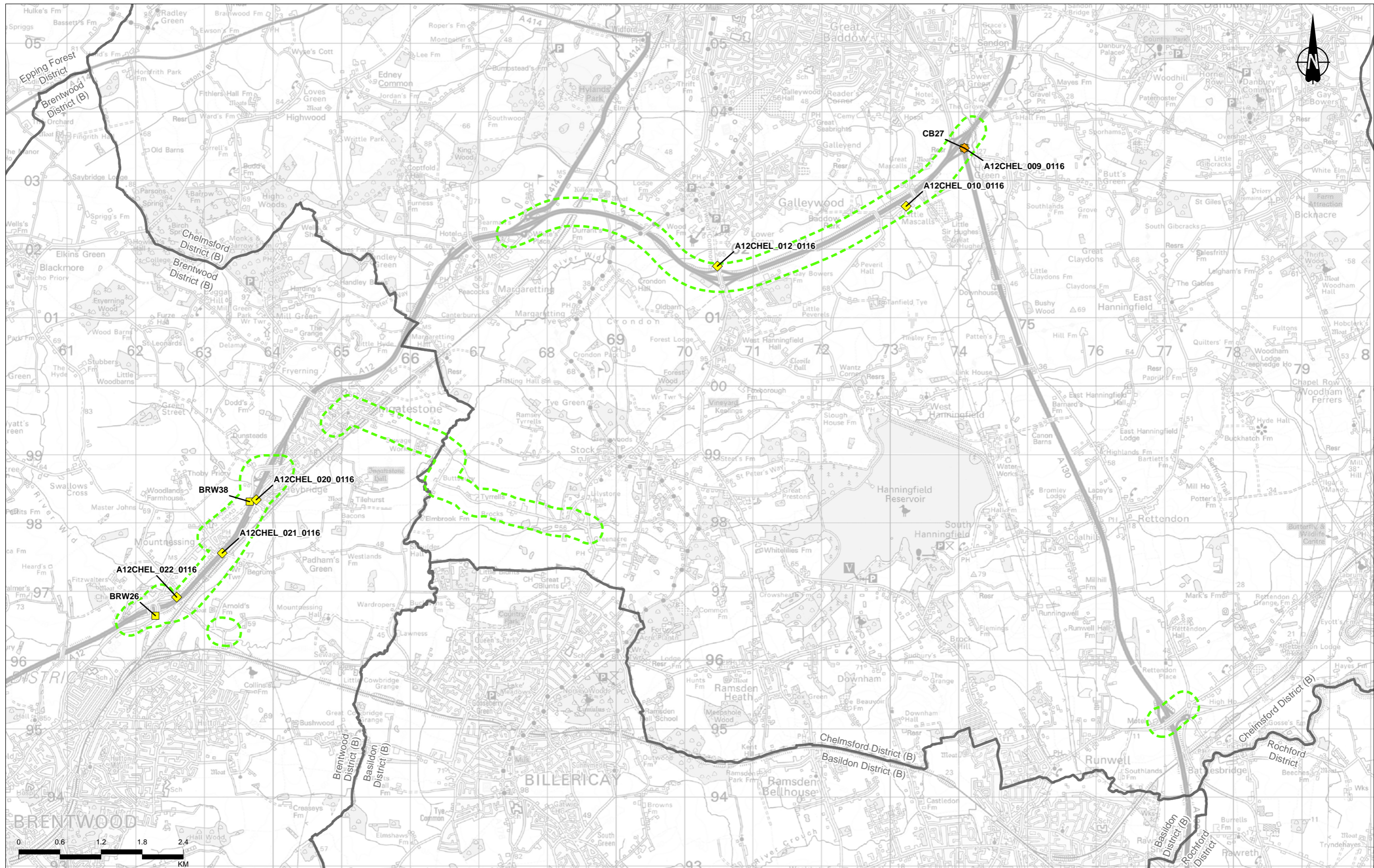
P02	S8	14/10/2022	DCO Application	CD	MS	PM
Rev	Status	Rev. Date	Purpose of revision	Drawn	Checked	Approved

<b>Legend</b> Route Alignment Order Limits District Borough Boundary Study Area Local Authority NO <sub>2</sub> Diffusion Tube Monitoring >40 ug/m <sup>3</sup> 36 - 40 ug/m <sup>3</sup> <36 ug/m <sup>3</sup>	>40 ug/m <sup>3</sup> 36 - 40 ug/m <sup>3</sup> <36 ug/m <sup>3</sup>	<b>Connect Plus NO<sub>2</sub> Diffusion Tube Monitoring</b> >40 ug/m <sup>3</sup> 36 - 40 ug/m <sup>3</sup> <36 ug/m <sup>3</sup>	<b>National Highways NO<sub>2</sub> Diffusion Tube Monitoring</b> >40 ug/m <sup>3</sup> 36 - 40 ug/m <sup>3</sup> <36 ug/m <sup>3</sup>	<b>Local Authority Automatic PM<sub>2.5</sub> Monitoring</b> <22.5 ug/m <sup>3</sup> <b>Local Authority Automatic PM<sub>10</sub> Monitoring</b> <36 ug/m <sup>3</sup>	<b>LTC NO<sub>2</sub> Diffusion Tube Monitoring</b> >40 ug/m <sup>3</sup> 36 - 40 ug/m <sup>3</sup> <36 ug/m <sup>3</sup>
-----------------------------------------------------------------------------------------------------------------------------------------------------------------------------------------------------------------------------------------	-----------------------------------------------------------------------------	---------------------------------------------------------------------------------------------------------------------------------------------	--------------------------------------------------------------------------------------------------------------------------------------------------	---------------------------------------------------------------------------------------------------------------------------------------------------------------------------------	------------------------------------------------------------------------------------------------------------------------------------



Client  
 national highways  
 Project  
**LOWER THAMES CROSSING**

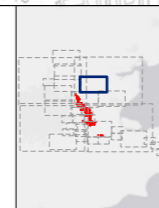
Status	DCO Application	Original Size	A3	Revision	P02
Application Document Number	TR010032/APP/6.2	Scale	1:50,000		
Drawing Title	Figure 5.4 - Air Quality Monitoring Sites and 2016 Annual Mean Data Page 28 of 33				
Drawing Number	HE540039-CJV-EAQ-SZP_EGNE00000000-DR-LE-50008				



Contains Ordnance Survey data. © Crown copyright and database rights 2022. Ordnance Survey 100030649.  
Contains public sector information licensed under the Open Government Licence v3.0.

Rev	Status	Rev. Date	Purpose of revision	Drawn	Checked	Approved
P02	S8	14/10/2022	DCO Application	CD	MS	PM

Legend	Local Authority Automatic NO <sub>2</sub> Diffusion Tube Monitoring	National Highways NO <sub>2</sub> Diffusion Tube Monitoring	Local Authority Automatic PM <sub>2.5</sub> Monitoring	LTC NO <sub>2</sub> Diffusion Tube Monitoring
Route Alignment	● <math>> 40 \text{ ug/m}^3</math>	● <math>< 36 \text{ ug/m}^3</math>	★ <math>< 22.5 \text{ ug/m}^3</math>	▼ <math>> 40 \text{ ug/m}^3</math>
Order Limits	● <math>36 - 40 \text{ ug/m}^3</math>	● <math>> 40 \text{ ug/m}^3</math>	★ <math>> 22.5 \text{ ug/m}^3</math>	▼ <math>36 - 40 \text{ ug/m}^3</math>
District Borough Boundary	● <math>> 40 \text{ ug/m}^3</math>	● <math>36 - 40 \text{ ug/m}^3</math>	★ <math>< 22.5 \text{ ug/m}^3</math>	▼ <math>< 36 \text{ ug/m}^3</math>
Study Area	● <math>> 40 \text{ ug/m}^3</math>	● <math>< 36 \text{ ug/m}^3</math>	★ <math>< 22.5 \text{ ug/m}^3</math>	
Local Authority NO <sub>2</sub> Diffusion Tube Monitoring	● <math>> 40 \text{ ug/m}^3</math>	● <math>< 36 \text{ ug/m}^3</math>	★ <math>< 22.5 \text{ ug/m}^3</math>	
	● <math>36 - 40 \text{ ug/m}^3</math>	● <math>> 40 \text{ ug/m}^3</math>	★ <math>> 22.5 \text{ ug/m}^3</math>	
	● <math>> 40 \text{ ug/m}^3</math>	● <math>36 - 40 \text{ ug/m}^3</math>	★ <math>< 22.5 \text{ ug/m}^3</math>	
	● <math>< 36 \text{ ug/m}^3</math>	● <math>> 40 \text{ ug/m}^3</math>	★ <math>> 22.5 \text{ ug/m}^3</math>	
	● <math>36 - 40 \text{ ug/m}^3</math>	● <math>< 36 \text{ ug/m}^3</math>	★ <math>< 22.5 \text{ ug/m}^3</math>	



Client: national highways

Project: LOWER THAMES CROSSING

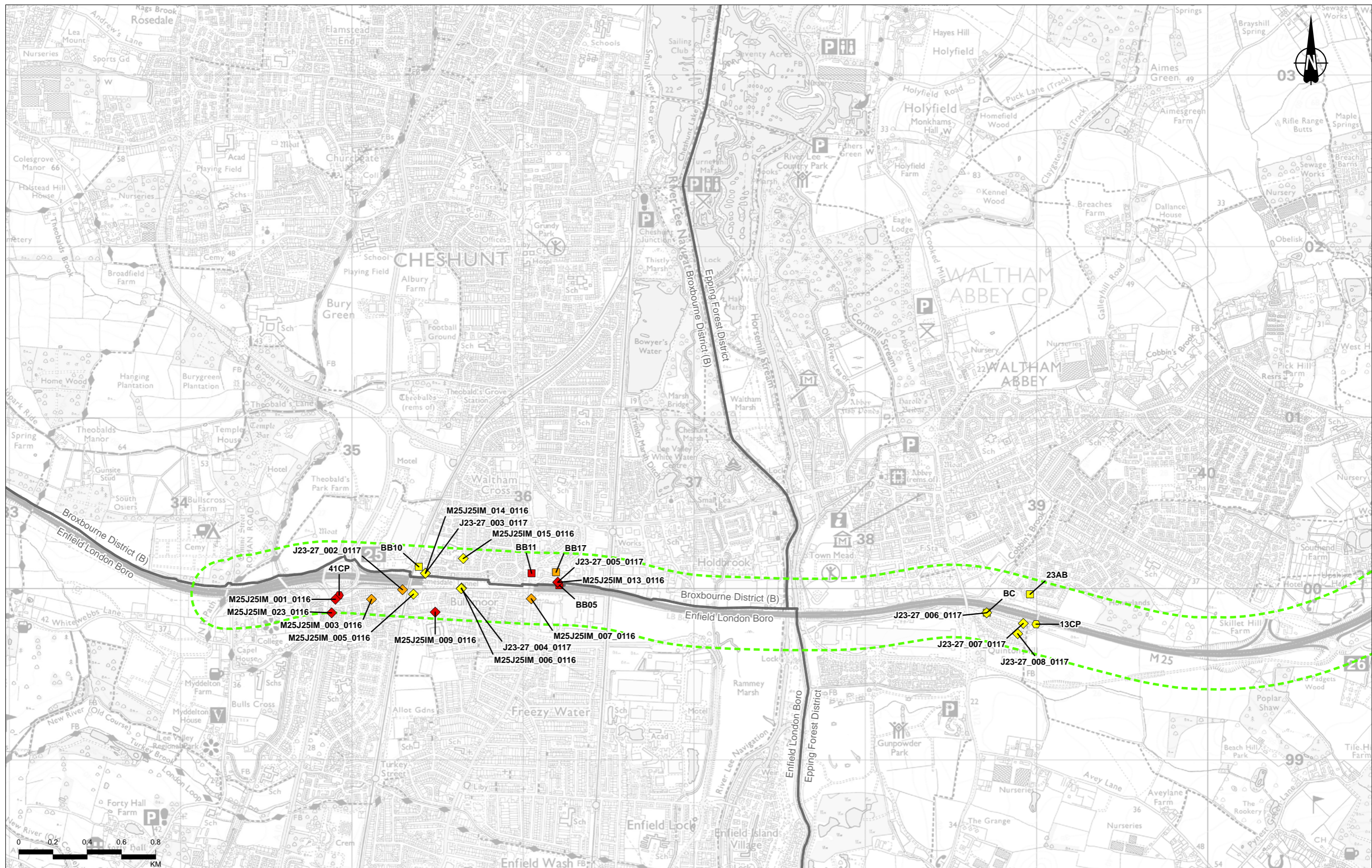
Status	DCO Application	Original Size	A3	Revision	P02
Application Document Number	TR010032/APP/6.2	Scale	1:50,000		
Drawing Title	Figure 5.4 - Air Quality Monitoring Sites and 2016 Annual Mean Data				
	Page 29 of 33				
Drawing Number	HE540039-CJV-EAQ-SZP_EGNE0000000-DR-LE-50008				



Route Alignment	36 - 40 ug/m <sup>3</sup>	Connect Plus NO <sub>2</sub> Diffusion Tube Monitoring	National Highways NO <sub>2</sub> Diffusion Tube Monitoring	Local Authority Automatic PM <sub>2.5</sub> Monitoring	LTC NO <sub>2</sub> Diffusion Tube Monitoring
Order Limits	<36 ug/m <sup>3</sup>	>40 ug/m <sup>3</sup>	>40 ug/m <sup>3</sup>	<22.5 ug/m <sup>3</sup>	>40 ug/m <sup>3</sup>
District Borough Boundary	Local Authority Automatic NO <sub>2</sub> Monitoring	>40 ug/m <sup>3</sup>	>40 ug/m <sup>3</sup>	Local Authority Automatic PM <sub>10</sub> Monitoring	>36 - 40 ug/m <sup>3</sup>
Study Area	>40 ug/m <sup>3</sup>	36 - 40 ug/m <sup>3</sup>	>40 ug/m <sup>3</sup>	<36 ug/m <sup>3</sup>	<36 ug/m <sup>3</sup>
Local Authority NO <sub>2</sub> Diffusion Tube Monitoring	36 - 40 ug/m <sup>3</sup>	>40 ug/m <sup>3</sup>	>40 ug/m <sup>3</sup>	<36 ug/m <sup>3</sup>	<36 ug/m <sup>3</sup>
	>40 ug/m <sup>3</sup>	>40 ug/m <sup>3</sup>	>40 ug/m <sup>3</sup>	<36 ug/m <sup>3</sup>	<36 ug/m <sup>3</sup>

Client	national highways
Project	LOWER THAMES CROSSING
Status	DCO Application
Application Document Number	TR010032/APP/6.2
Drawing Title	Figure 5.4 - Air Quality Monitoring Sites and 2016 Annual Mean Data
Drawing Number	HE540039-CJV-EAQ-SZP_EGNE00000000-DR-LE-50008

Original Size	A3	Revision	P02
Scale	1:50,000		



Contains Ordnance Survey data. © Crown copyright and database rights 2022. Ordnance Survey 100030649.  
Contains public sector information licensed under the Open Government Licence v3.0.

P02	S8	14/10/2022	DCO Application	CD	MS	PM
Rev	Status	Rev. Date	Purpose of revision	Drawn	Chkd	Appvd

<b>Legend</b> Route Alignment Order Limits District Borough Boundary Study Area Local Authority NO <sub>2</sub> Diffusion Tube Monitoring ■ >40 ug/m <sup>3</sup> ■ 36 - 40 ug/m <sup>3</sup> ■ <36 ug/m <sup>3</sup>	■ 36 - 40 ug/m <sup>3</sup> ■ <36 ug/m <sup>3</sup> <b>Local Authority Automatic NO<sub>2</sub> Monitoring</b> ● >40 ug/m <sup>3</sup> ● 36 - 40 ug/m <sup>3</sup> ● <36 ug/m <sup>3</sup>	<b>Connect Plus NO<sub>2</sub> Diffusion Tube Monitoring</b> ● >40 ug/m <sup>3</sup> ● 36 - 40 ug/m <sup>3</sup> ● <36 ug/m <sup>3</sup>	<b>National Highways NO<sub>2</sub> Diffusion Tube Monitoring</b> ◆ >40 ug/m <sup>3</sup> ◆ 36 - 40 ug/m <sup>3</sup> ◆ <36 ug/m <sup>3</sup>	<b>Local Authority Automatic PM<sub>2.5</sub> Monitoring</b> ☆ <22.5 ug/m <sup>3</sup> <b>Local Authority Automatic PM<sub>10</sub> Monitoring</b> ▲ <36 ug/m <sup>3</sup>	<b>LTC NO<sub>2</sub> Diffusion Tube Monitoring</b> ▼ >40 ug/m <sup>3</sup> ▼ 36 - 40 ug/m <sup>3</sup> ▼ <36 ug/m <sup>3</sup>
-----------------------------------------------------------------------------------------------------------------------------------------------------------------------------------------------------------------------------------------------	-----------------------------------------------------------------------------------------------------------------------------------------------------------------------------------------------------------	---------------------------------------------------------------------------------------------------------------------------------------------------	--------------------------------------------------------------------------------------------------------------------------------------------------------	-------------------------------------------------------------------------------------------------------------------------------------------------------------------------------------	------------------------------------------------------------------------------------------------------------------------------------------

Client: **national highways**

Project: **LOWER THAMES CROSSING**

Status	DCO Application	Original Size	A3	Revision	P02
Application Document Number	TR010032/APP/6.2	Scale	1:20,000		
Drawing Title	Figure 5.4 - Air Quality Monitoring Sites and 2016 Annual Mean Data				
Drawing Number	HE540039-CJV-EAQ-SZP_EGNE0000000-DR-LE-50008				
Page 31 of 33					



If you need help accessing this or any other National Highways information, please call **0300 123 5000** and we will help you.

© Crown copyright 2022.

You may re-use this information (not including logos) free of charge in any format or medium, under the terms of the Open Government Licence. To view this licence:

visit [www.nationalarchives.gov.uk/doc/open-government-licence/](http://www.nationalarchives.gov.uk/doc/open-government-licence/)

write to the **Information Policy Team, The National Archives, Kew, London TW9 4DU**, or email [psi@nationalarchives.gsi.gov.uk](mailto:psi@nationalarchives.gsi.gov.uk).

Mapping (where present): © Crown copyright and database rights 2022 OS 100030649. You are permitted to use this data solely to enable you to respond to, or interact with, the organisation that provided you with the data. You are not permitted to copy, sub-license, distribute or sell any of this data to third parties in any form.

If you have any enquiries about this publication email [info@nationalhighways.co.uk](mailto:info@nationalhighways.co.uk) or call **0300 123 5000\***.

\*Calls to 03 numbers cost no more than a national rate call to an 01 or 02 number and must count towards any inclusive minutes in the same way as 01 and 02 calls. These rules apply to calls from any type of line including mobile, BT, other fixed line or payphone. Calls may be recorded or monitored.

Printed on paper from well-managed forests and other controlled sources when issued directly by National Highways.

Registered office Bridge House, 1 Walnut Tree Close, Guildford GU1 4LZ

National Highways Company Limited registered in England and Wales number 09346363